
XPVM – An X window based interface to the PVM monitor

Gregor von Laszewski

SCCS 602

Northeast Parallel Architectures Center
at
Syracuse University
Science and Technology Center
111 College Place
Syracuse, NY 13244-410



1 Introduction

PVM, the Parallel Virtual Machine, provides the opportunity to access a heterogeneous computer network for solving a particular problem. We observed that machines at institutes are sometimes not easy to access because the user simply does not know the names or the IP address of the machines in the cluster. A look in `/etc/hosts` might be helpful but does often not show on which machine pvm should not be executed.

In order to assist the generating of hostfiles, the organization of the pvm daemons and the execution of the pvm application we decided to write a simple but powerful interface customized for our machine configuration. We have been careful with the design in order to make the program portable so that other PVM users at other institutes might profit from the tool.

2 The Graphical User Interface

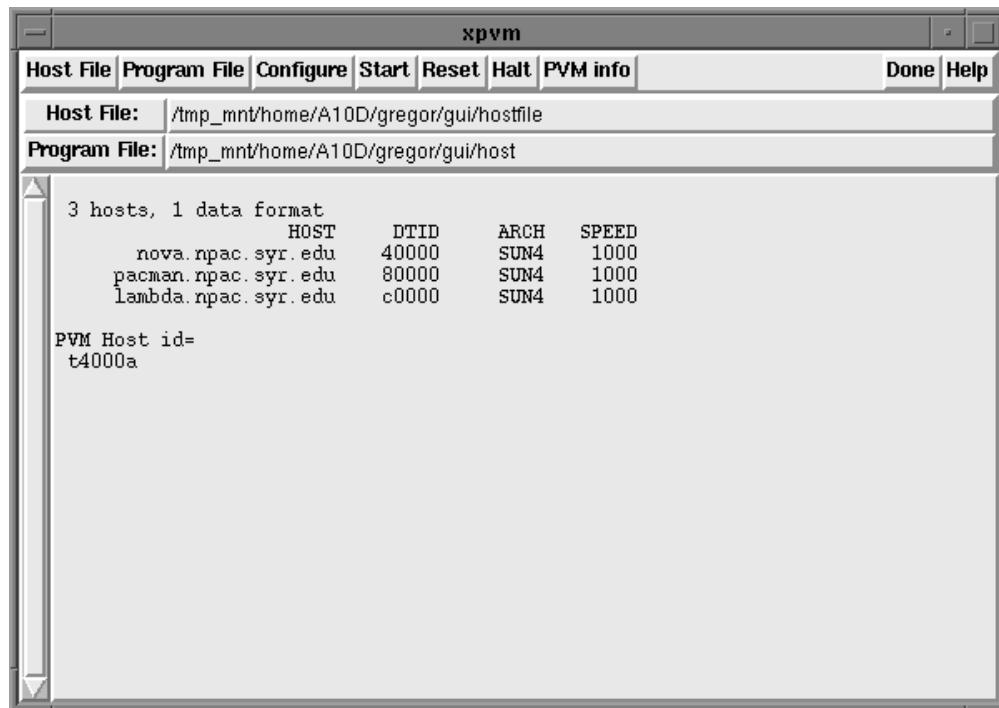


Figure 1: The climate model overview

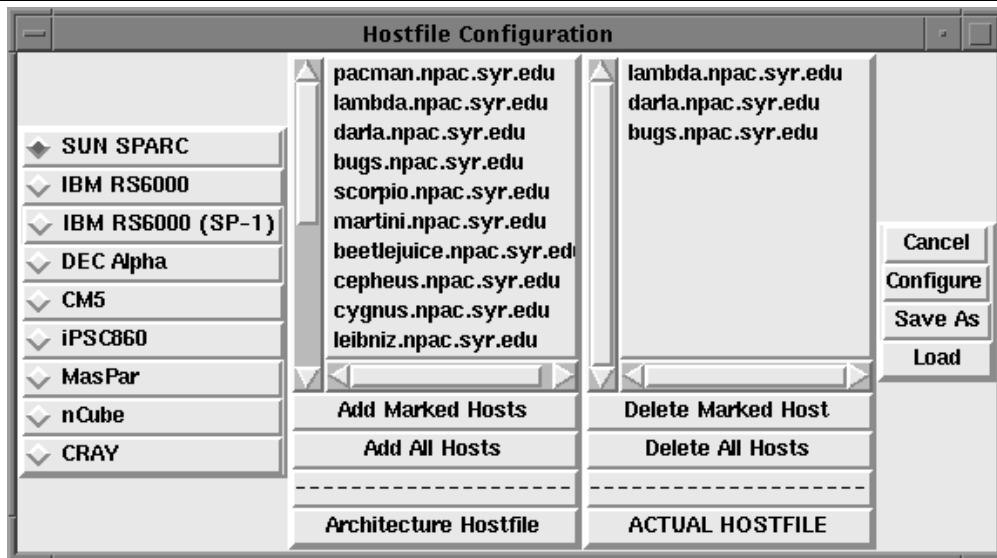


Figure 2: The climate model overview